

**A.R.C.
LASER**

enlighten your surgery.



CLASSIC₅₁₄

THE ARGON LASER
in a **μ-chip**

LASER...INNOVATION
MADE IN GERMANY

www.arclaser.de info@arclaser.de

CLASSIC₅₁₄

Retinal Coagulation



Argon 514 nm wavelength
THE ORIGINAL RETINAL LASER

Ergonomic design
EASE OF USE

Unobstructed view
TAKE CONTROL OF YOUR SURGERY

Introducing the most advanced technology for retinal coagulation

Ergonomic design enables easy and intuitive control of all critical functions. To easily change the spot size from 50 μm up to a maximum of 600 μm sets a new standard in ophthalmology. Select from 5 magnification levels to achieve the best optical view. The "Neutral Color Design" incorporates a noiseless protection filter. Single hand operation of the slit lamp allows ease of maneuverability especially when using a contact lens. The Classic 514 laser system satisfies all demands for advanced Laser photocoagulation. The laser and slit lamp are proudly designed and manufactured in Nuremberg, Germany.

SOPHISTICATED 2 COLUMN DESIGN

Adjustable table height for more legroom

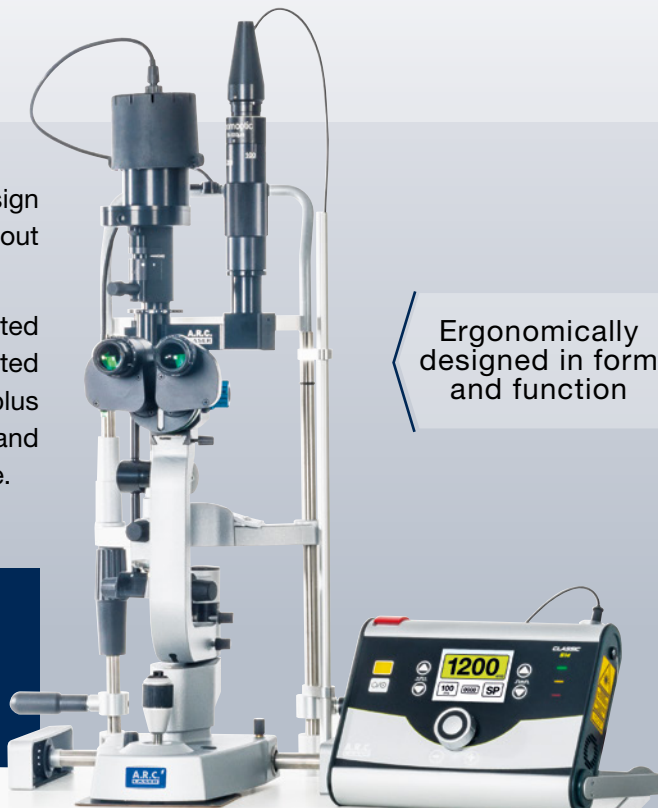
Legroom

Compact, space saving design is available with or without wheels.

Unique daylight compensated protection filter is integrated in the optical system, plus a selection of name brand contact lenses are available.

Ergonomically designed in form and function

accessories



Anti-collision system

Hidden compartment for all connections

Electronic height adjustment up to 920 mm

Stable and slim design, wheelchair accessible

Unique in
OPHTHALMOLOGY

580 mm

725 mm

to
920
mm

Intelligent Features

Integrated protection filter

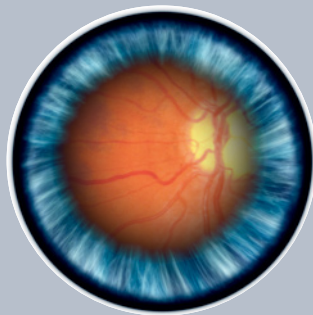
Continuously adjustable output power range from 0.05 up to 1.3 W

Intuitive control

Laser and slit illumination 100% coaxial



The precision viewing optic and coaxial laser create an uncompromised treatment outcome.

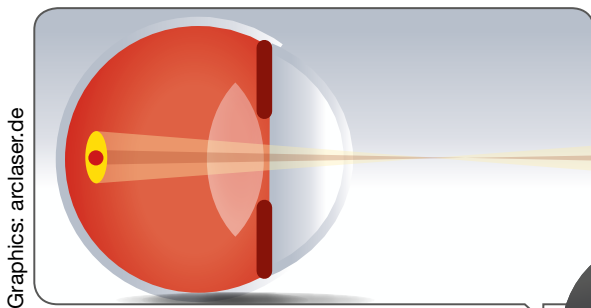


“Super View”
Swing in or swing out the laser beam.

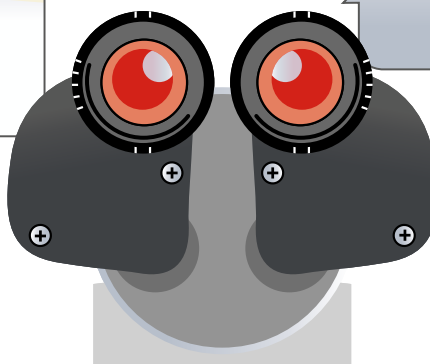


Slit lamp PCL5 SH

Specially coated optics with parallel or convergent tube provide a detailed view into the posterior segment

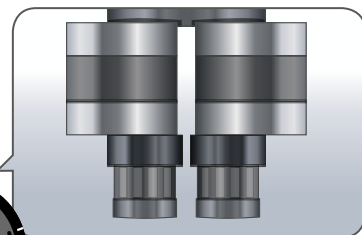


The “Neutral Color Design” integrated protection filter protects you from harmful laser reflections.



Parallel Tube (optional)

Your option to choose parallel or convergent tube.



CLASSIC + PCL5

The best optical delivery system for retinal treatments.

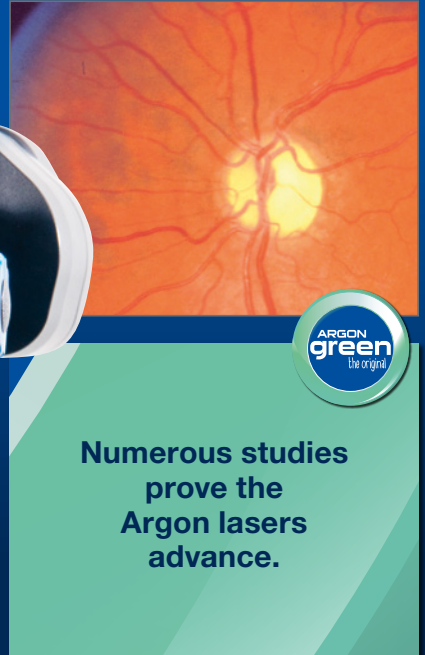
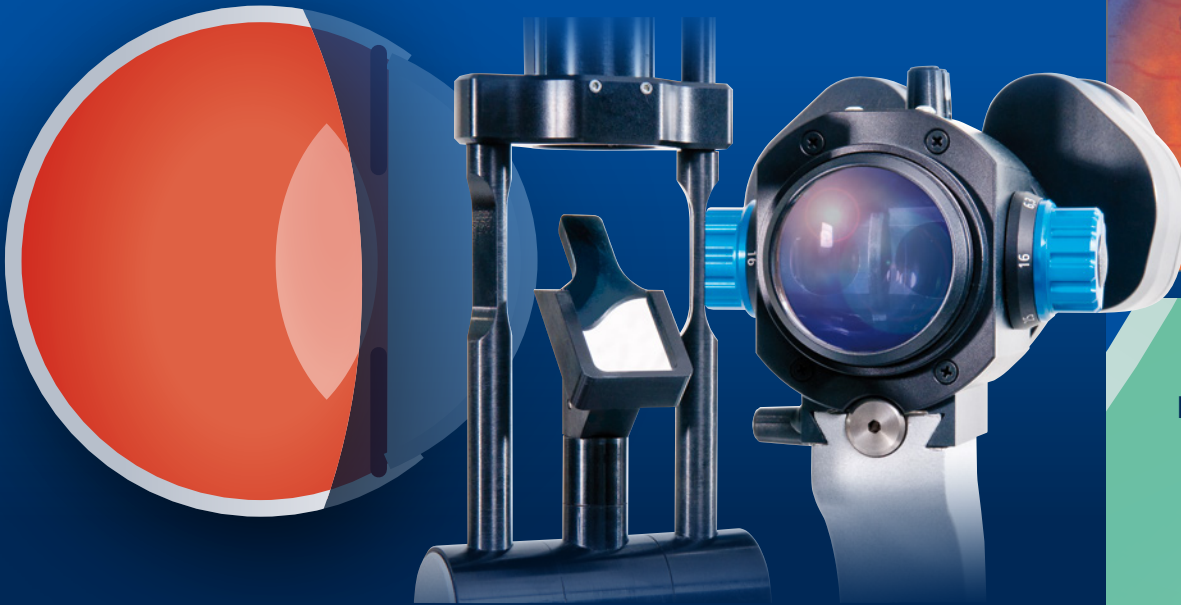
A.R.C.
LASER

PCL5 SH

Designed for the
posterior segment

Q-LAS

The Nd:YAG laser
for you.



CLASSIC 514: COMPACT, VERSATILE AND POWERFUL

The microchip Argon laser CLASSIC 514 is unsurpassed when combined with the PCL5.



Laser coupling with maximum safety: Mirror based beam combiner with coaxial delivery to the slit lamp.



Embossed buttons for intuitive control. The large display offers optimum visibility.



Slim and compact – designed to fit anywhere.

The CLASSIC 514 combines ergonomics and durability in an innovative DESIGN.

A.R.C. LASER PORTFOLIO

Smallest Argon laser

Nd:YAG with DualSpot

SLT glaucoma therapy

MORE OPTIONS: VARIO.

2 premium lasers on one table.



CLASSIC System 514 10.01.20 rev3

PHOTOCOAGULATION SYSTEM, RETINAL LASER **CLASSIC 514**

SPECIFICATIONS:

laser	chip laser 514 nm
output power Cornea	1200 mW
pulse width	1 ms, 2, 4, 6, 8, 10, 25, 50, 75, 100, 150, 200, 300, 400, 500, 600, 700, 800, 900ms, 1 s, 1,5s, 2 s
repetition rate	1, 2, 3, 4, 5, 10 Hz
fiber dimension	fiber 62 µm
cooling	air
dimensions WHD	25 x 17 x 22 cm
weight	3.3 kg
power supply	100 to 240V 47/63Hz, 120 Watt
laser class	4 514 nm, P = 2 W aiming beam: red 635 nm, P < 5 mW



Alterations of the described features or pictured features are possible. Please keep updated on the current status before ordering.
Subject to change without notice.
© A.R.C. Laser 2019.

VISIBLE AND INVISIBLE LASER RADIATION
Avoid direct irradiation of eye or skin or scattered radiation.
laser class: see technical specifications



**A.R.C.
LASER**
enlighten your surgery.

A.R.C. Laser GmbH
Bessemerstr. 14
90411 Nuremberg
Germany

+49 911 217 79 -0
+49 911 217 79 99
info@arclaser.com
www.arclaser.com

Your local distributor: